



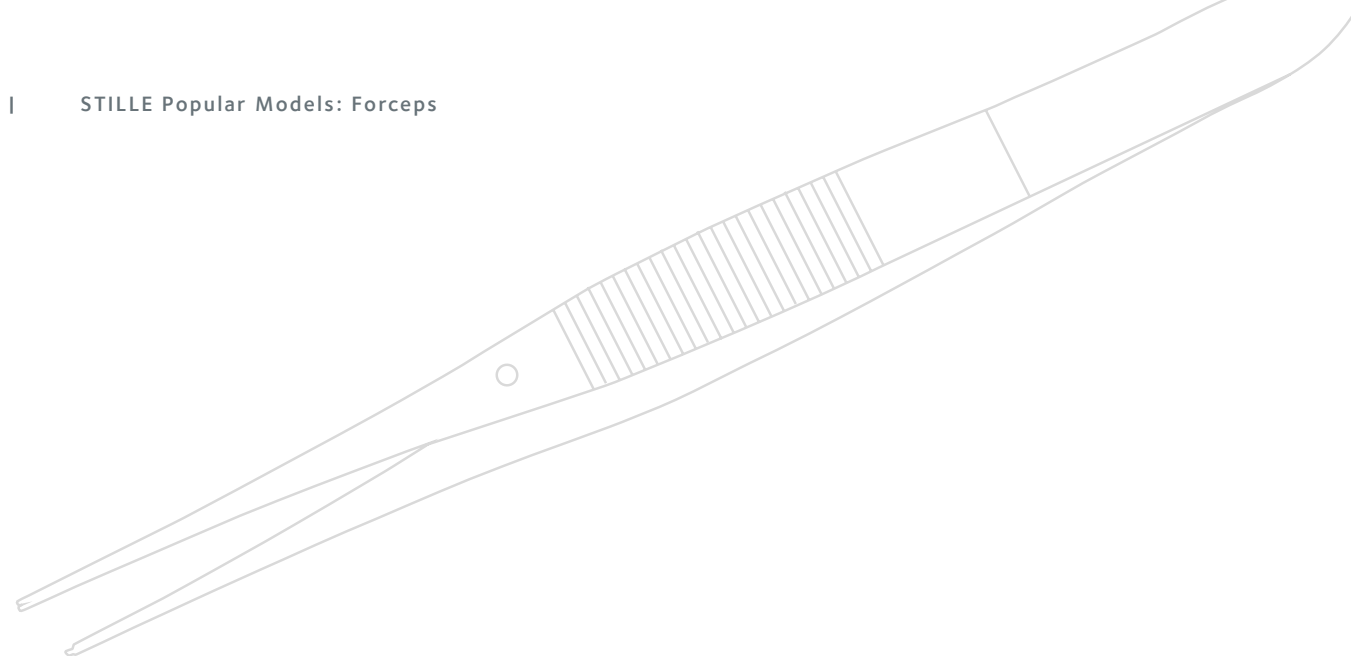
Surgical perfection. For life.



STILLE

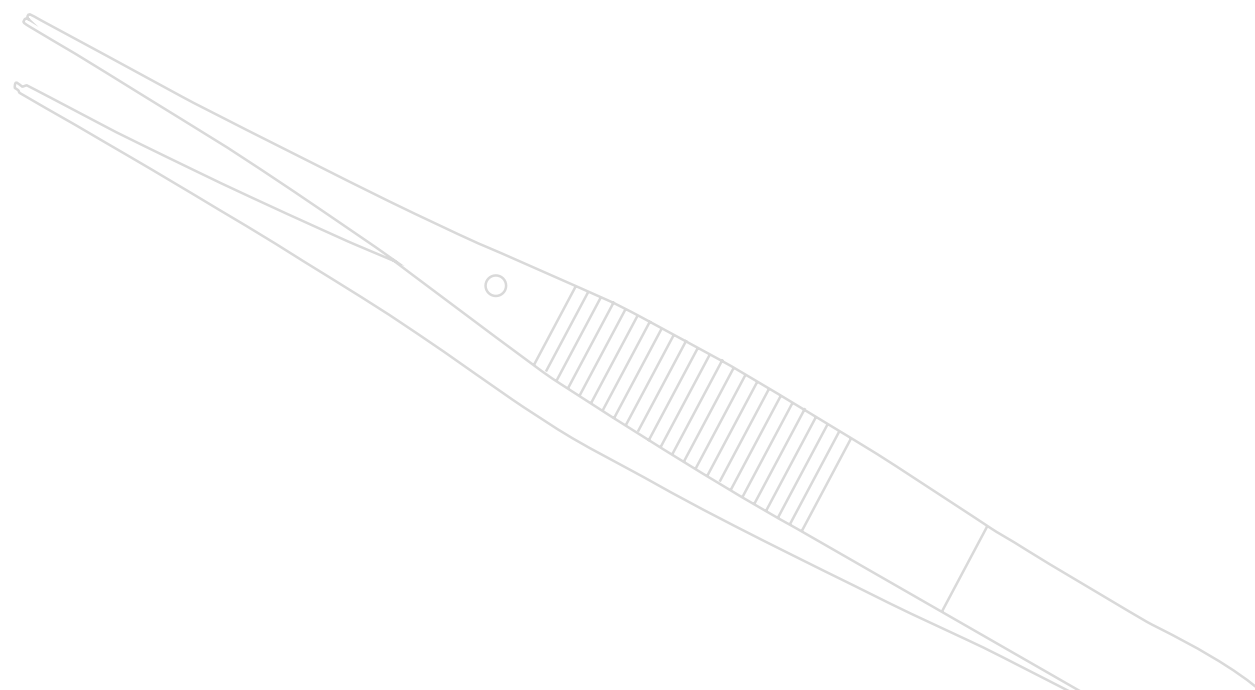
Popular Models: Forceps

Perfect tissue handling. Every time.



STILLE offers the highest quality handmade instruments for the world's best surgeons

Feel and balance characterize STILLE's forceps. During manufacturing, the spring tension in the instrument is adjusted in order to obtain the tension and feel required to precisely control the instrument without tiring the surgeon's hand. STILLE enhances your investment in quality by providing you with a 30-year instrument warranty.



As an extension of the surgeon's thumb and forefinger, forceps need to grasp and release with the same sensitivity as a pair of fingertips. The claws on surgical forceps are specially designed to make a firm, yet gentle, grasp of the tissue. The anatomical forceps are designed, as much as possible, to take an atraumatic grip on sensitive tissue. This gives the surgeon full control while causing as little harm to the tissue as possible.

Forceps are among the surgical instruments that founder Albert Stille learned to make from scratch during his apprenticeship in the 1830's. Forceps are seemingly simple instrument but still demands ultra-precision in the manufacturing process. Over the years, STILLE's forceps continue to be refined and are today recognized for their unique feel and excellent balance in combination with unsurpassed longevity.

TISSUE FORCEPS

Tissue forceps are designed to create a secure grip of the tissue with as little trauma as possible. The soft and precise feeling of STILLE tissue forceps ensure precise handling.

DRESSING FORCEPS

Dressing forceps are used when a minimized tissue trauma is needed.

DURA FORCEPS

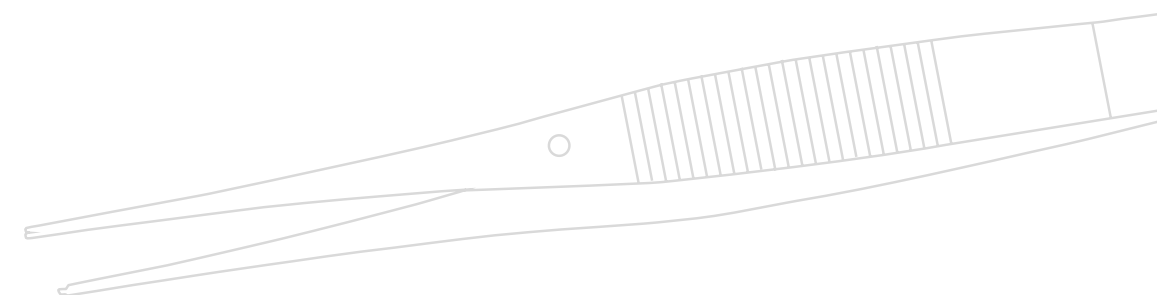
Forceps mainly intended for handling of the dura, with non-penetrating tips.

VASCULAR FORCEPS

Atraumatic forceps with DeBakey jaws for handling of blood vessels and other delicate tissue.

DIATHERMY FORCEPS

Insulated forceps for increased safety when using forceps for monopolar diathermy.





Forceps

POPULAR MODELS

- 6 Tissue Forceps
- 10 Dressing Forceps
- 12 Dura Forceps
- 13 Vascular Forceps
- 14 Diathermy Forceps



Art. Number: 102-9022



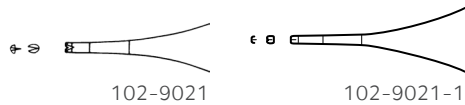
ADSON STILLE TISSUE FORCEPS

Tissue forceps with very delicate points and 1x2 fine teeth. Used in most specialties for delicate work.

ART. NUMBER	TEETH	TIPS	LENGTH
102-9019	1x2	Very delicate	12 cm 4.75"
102-9022	1x2	Cross-serrated	12 cm 4.75"
102-9022-15	1x2	Cross-serrated	15 cm 6"



Art. Number: 102-9021-1



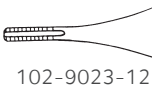
ADSON-CALLISON STILLE TISSUE FORCEPS

Tissue forceps with tying platform and 1x2 fine teeth.

ART. NUMBER	TEETH	TIPS	LENGTH
102-9021	1x2	Tying platform	12 cm 4.75"
102-9021-1	1x2	Delicate tying platform	12 cm 4.75"



Art. Number: 102-9023-12



ADSON-BROWN STILLE TISSUE FORCEPS

Tissue forceps with side-grasping teeth for secure, atraumatic grasping of soft tissue or cartilage.

ART. NUMBER	TEETH	LENGTH
102-9023-12	Side-grasping	12 cm 4.75"



GILLIES STILLE TISSUE FORCEPS

Tissue forceps with 1x2 fine teeth and stabilizing pin. An excellent forceps for the surgeon who wants an Adson-size tip, but with greater length.

ART. NUMBER	TEETH	TIPS	LENGTH
102-9027	1x2 fine	Serrated	15.5 cm 6.25"



Art. Number: 102-9027



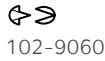
STILLE DELICATE TISSUE FORCEPS

Tissue forceps with 1x2 fine teeth and stabilizing pin. Delicate model.

ART. NUMBER	TEETH	TIPS	LENGTH
102-9028	1x2 fine	Serrated	15.5 cm 6.25"



Art. Number: 102-9028



STILLE 1X2 TEETH TISSUE FORCEPS

Tissue forceps with 1x2 teeth.

ART. NUMBER	TEETH	LENGTH
102-9060-15	1x2	15 cm 6"
102-9060-17	1x2	17 cm 6.75"
102-9060-20	1x2	20 cm 8"



Art. Number: 102-9060-17



STILLE 2X3 TEETH TISSUE FORCEPS

Tissue forceps with 2x3 teeth. Used when more grasping power than 1x2 teeth is needed.

ART. NUMBER	TEETH	LENGTH
102-9062-15	2x3	15 cm 6"
102-9062-17	2x3	17 cm 6.75"
102-9062-20	2x3	20 cm 8"



Art. Number: 102-9062-20



WAUGH-BROPHY TISSUE FORCEPS

Tissue forceps with 1x2 fine teeth. Very fine tips, like Adson. Useful when long and slender instruments are needed.

ART. NUMBER	TEETH	TIPS	LENGTH
102-9252-20	1x2	Cross-serrated	20 cm 8"
102-9252-25	1x2	Cross-serrated	25 cm 10"



Art. Number: 102-9252-25

ADSON STILLE DRESSING FORCEPS

Dressing forceps with delicate, serrated tips.

ART. NUMBER	JAWS	LENGTH
102-9020	Serrated	12 cm 4.75"



102-9020



Art. Number: 102-9020

MCINDOE STILLE DRESSING FORCEPS

Dressing forceps with stabilizing pin and delicate jaws for grasping fine tissue.

ART. NUMBER	JAWS	LENGTH
102-9025	Serrated	15.5 cm 6.25"



102-9025



Art. Number: 102-9025-1

STILLE SQUARE POINTS DRESSING FORCEPS

Dressing forceps with square shaped and serrated points used in all surgical specialties.

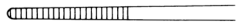
ART. NUMBER	POINTS	LENGTH
102-9030-15	Square	15 cm 6"
102-9030-20	Square	20 cm 8"
102-9030-25	Square	25 cm 10"



102-9030



Art. Number: 102-9030-15



102-9077-20

CRAFOORD-STILLE DRESSING FORCEPS

Dressing forceps with rounded points. The perfect balance and delicate grip gives this instrument a unique feeling.

ART. NUMBER	JAWS	LENGTH
102-9077-20	Serrated	20 cm 8"



Art. Number: 102-9077-20



102-9254

WAUGH-BROPHY STILLE DRESSING FORCEPS

Dressing forceps with very fine points and cross-serrated jaw surface, enabling excellent holding power.

ART. NUMBER	JAWS	LENGTH
102-9254	Cross-serrated	20 cm 8"



Art. Number: 102-9255-20



Art. Number: 102-9244-15



OLIVECRONA-STILLE DURA FORCEPS

Dura forceps with 2x3 fine teeth. The nonpenetrating tips give the surgeon maximum grip without damaging the tissue.

ART. NUMBER	TEETH	LENGTH
102-9244-20	2x3 fine	20 cm 8"

It is the fine tuning that creates the perfect balance with a smooth, resilient spring action and a firm grip.

The jaws on surgical forceps are specially designed to make a firm, yet gentle, grasp of the tissue.



Art. Number: 102-9312

102-9300	102-9314
102-9302	102-9316
102-9304	

STILLE DE BAKEY VASCULAR FORCEPS

Atraumatic forceps with De Bakey jaws for handling of blood vessels and other delicate tissue. Can be insulated on request.

ART. NUMBER	JAWS	TIPS	LENGTH
102-9300	De Bakey	2 mm	15 cm 6"
102-9302	De Bakey	2 mm	20 cm 8"
102-9304	De Bakey	2 mm	25 cm 10"
102-9314	De Bakey	2.7 mm	20 cm 8"
102-9316	De Bakey	2.7 mm	25 cm 10"



Art. Number: 102-9845-20



102-9845

BJÖRK-STILLE INSULATED DIATHERMY FORCEPS

Insulated forceps for monopolar diathermy. Serrations allow grasping of delicate structures.

ART. NUMBER	JAWS	LENGTH
102-9845-20	Serrated	20 cm 8"
102-9845-25	Serrated	25 cm 10"

“STILLE instruments just work every time, there is no second guessing on their quality or dependability.”

- Dr. Mark L. Jewell, M.D.
Plastic Surgeon

**For a complete presentation
of all STILLE forceps,**

Scan the QR code to visit our website and
see our product catalogue



950-G102-0001-EN-01 © 2024-02-21 STILLE. All rights reserved.

Surgical perfection. For life.



Surgical perfection. For life.

STILLE AB

Ekbacken 11
SE-644 30 Torshälla, Sweden
☎ +46 8 588 580 00
✉ info@stille.se
🌐 www.stille.se

STILLE SURGICAL INC.

840 Parkview Blvd
Lombard, IL 60148
United States
Phone: 1.800.6651614

DISTRIBUTED BY: