



Surgical perfection. For life.

STILLE Medstone PM Electrophysiology / Spinal / Pain Management

High Quality Hospital Grade Surgical Imaging Tables 227 kg (500lb) Weight Capacity

The STILLE Medstone C-arm tables contribute to enhancing efficiency while representing an affordable solution with quality and reliability provided by Swedish technology.

STILLE Medstone PM Surgical Imaging Tables

2, 3, 4 and 5-Movement C-arm table for electrophysiology, spinal, pain management and any other applications that require good quality imaging, high performance, reliability and ease of use at affordable costs.

- Motorized movements
- 227 kg (500lb) patient weight capacity
- Carbon fiber table top with <1mm Aluminium Equivalence
- Auto horizontal and center home positioning
- Four hospital grade locking casters for great mobility
- Metal free imaging 147 cm (58")
- 230Vac, 3,4A, 50 Hz and 120Vac, 6.5A, 60 Hz with 230Vac or 120Vac style line cord
- 5 cm (2") table mattress and 3 patient straps
- Wired hand control

2, 3, 4 or 5 Motorized Movement Options Available:

- Height Adjustment
- Trendelenburg
- Lateral tilt
- Longitudinal travel
- Lateral travel

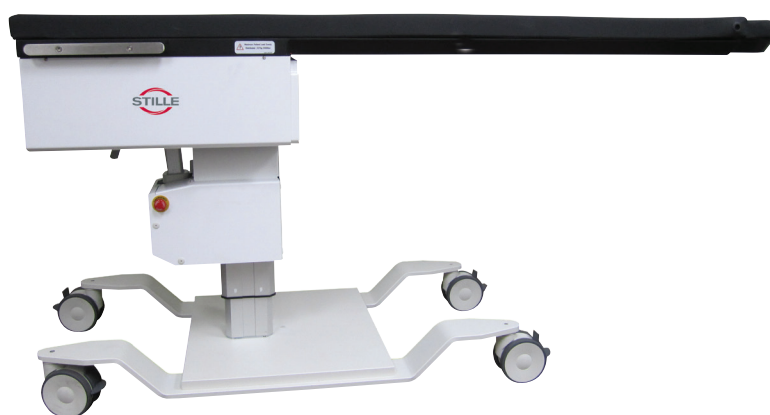


Photo shows Medstone5 PM (500-1001)

Model	Medstone2 PM	Medstone3 PM	Medstone4 PM	Medstone5 PM
Part number	500-1011	500-1006	500-1004	500-1001
Height adjustment	65.3 - 100.6 cm (25.5"-39.3")	66.4-101.8 cm (26.1"-39.9")	73.0-108.0 cm (28.7"-42.5")	65.5-101.0 cm (25.8"-39.7")
Lateral tilt	± 15°	± 15°	± 15°	± 15°
Trendelenburg	x	± 15°	± 15°	± 15°
Longitudinal travel	x	x	40 cm (16")	40 cm (16")
Lateral travel	x	x	x	15 cm (6")
Auto horizontal and center home positioning	✓	✓	✓	✓
Infectious control covers	x	x	x	✓
Table top	A	A	A	B

Specification tolerance: ±1°, ± 1.27cm (.5")

A=Contoured table top 56x208cm (22"x82") with facial cutout.

B= Same as A plus a 30.4cm (11.97") long side rail fixed to the table top.

Various Table Tops Available



56 cm wide standard table top* contoured with facial cutout for prone patient positioning with optional arm board 505-1112.

*Recommended for pain management



56 cm wide rectangular table top* (505-1101) without facial cutout with optional arm board 505-1112.

*Recommended for electrophysiology and spinal.



66 cm wide rectangular table top* (505-1104) without facial cutout.

*Recommended for ERCP or procedures with large/wide patients or patients placed on their side

Optional Accessories

Part number	Description
505-1179	2 detachable side rails length 80.5cm (31.69") for all models with tops 56x208 cm (22"x82") except tables with table top B
505-1175	2 detachable side rails length 112.5cm (44.29") only for model 500-1001 with table top 56x208cm (22"x82")
505-1181	2 detachable side rails length 80.5cm (31.69") for all tables with wide table tops 66x208 cm (26"x82")
514-50-3SR025	Universal adjustable arm board with clamp (side rail mounted)
505-1112	Arm board with pad and clamp for attachment directly to the table top (not compatible with extra wide table top)
505-1110	Dual arm board with pads; to be placed across the table top; no clamps or side rails needed
514-100401	IV-pole with clamp (side rail mounted)
514-100311	Anesthesia frame with clamps (side rail mounted)
535-1773	X-ray protective loop blue, 5 connected panels, attachment to side rails or table top with self-adhesive Velcro © strips
535-1772	X-ray protective loop grey, 5 connected panels, attachment to side rails or table top with self-adhesive Velcro © strips
535-1771	X-ray protective kit blue, 6 single panels; attachment to table top with self-adhesive Velcro © strips
535-1770	X-ray protective kit grey, 6 single panels; attachment to table top with self-adhesive Velcro © strips
505-1140	Foot control for Medstone2 PM
505-1107	Foot control for Medstone3 PM
505-1108	Foot control for Medstone4 PM
505-1109	Foot control for Medstone5 PM



Surgical perfection. For life.

STILLE AB

Ekbacken 11
SE-644 30
Torshälla, Sweden
Phone: +46 8 588 580 00
Fax: +46 8 588 580 05
sales@stille.se

www.stille.se